

Make Your Mark

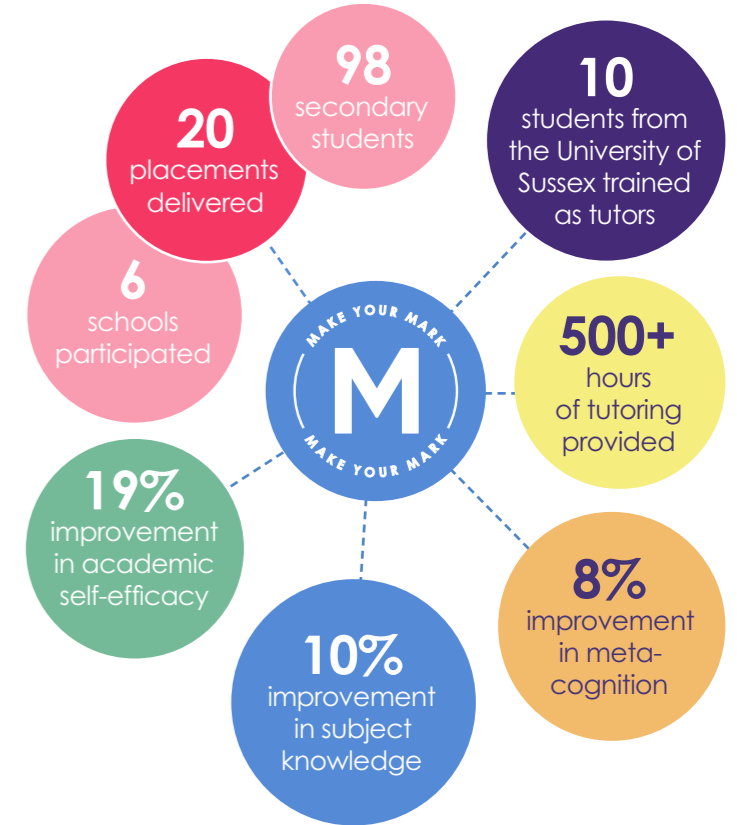


Make your Mark pilot - University of Sussex

From January - July 2023, we piloted Make your Mark with University of Sussex in schools across South Coast. Places on the programme were part-funded by the University of Sussex.

The programme was offered to groups of five and we trained current undergraduates as tutors. The graphic below shows the pilot's outputs and outcomes.

The programme tackles **Risk 1: Knowledge and Skills**, and **Risk 4: Application success rates**, from the OfS' Equality of Opportunity Risk Register.



What is Make your Mark?

The Brilliant Club's Make your Mark programme has been created to boost attainment for less advantaged students.

Academic attainment gaps persist between more and less advantaged students. The COVID-19 pandemic has exacerbated these disparities and widened the gap, which could take many years to close.

Make your Mark aims to boost the attainment of Year 10 students in core curriculum subjects through 12 hours of tutoring delivered by one of our trained undergraduate tutors. Our pilot data has shown that it increases students' curriculum subject knowledge, meta-cognition, and academic self-efficacy.

The largest shift in academic self-efficacy was a **28% increase** in students being confident that they know what the most effective study strategies are.

Followed by a **24% increase** in students being confident that they can use the most effective study strategies with their schoolwork.



Students from **less advantaged** backgrounds are **18 months behind** their **more advantaged** peers by the time they take their GCSEs.



As GCSE attainment is one of the biggest predictors of progression to higher education, the education sector must work together to raise attainment for students from less advantaged backgrounds. One way to help close this gap is through providing tutoring programmes. Research shows strong links between tutoring and improvements in school attainment and, crucially, tuition that focuses on the development of study strategies can enhance learning outcomes for students in the long term.

Theory of Change

Mission	Activities	Outcomes
Boosting attainment for less advantaged students	Student tutorials	<ul style="list-style-type: none"> Academic self-efficacy Study strategy use Subject knowledge GCSE attainment



Make your Mark: Key Features

- Target pupil criteria: Pupil premium eligibility, No parental history of higher education, Deprivation according to postcode IDACI 1-4
- Pre-designed modules that combine curriculum content in English or Maths with effective study strategies.
- End of programme impact report which includes in-depth analysis of programme outcomes.
- Tutoring helps students develop broad employability skills including time management, communication and data-driven decision making. 100% of tutors believe that their experience in the programme is useful for future job applications.